

— NMAG India

digiMats

Guitar Scales

NMAG India

Tips:

- Use a metronome to develop a better sense of rhythm. Doing so also helps learn faster and keep a better focus by setting goals. You should start off slow and increase speed.
- Apply these scales over real music and different backing tracks. This helps retain the scales faster and gives it a musical context.
- Link the different patterns together.

HOW TO READ THE FOLLOWING PATTERNS?

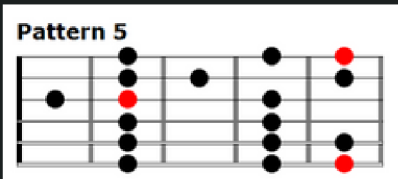
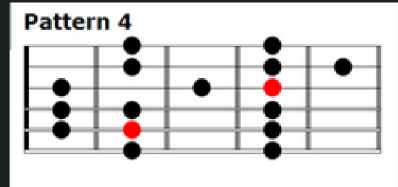
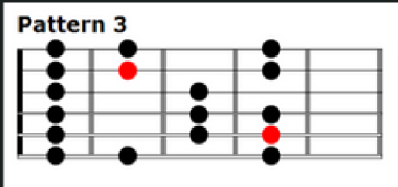
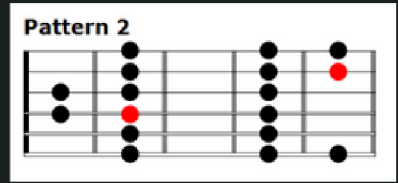
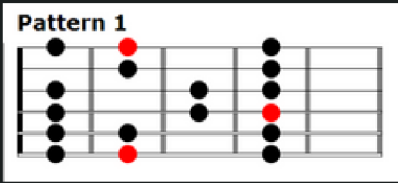
You are familiar with the guitar scales patterns?

Great! You will find the most used scales right in this file.
You are not sure how to read the scales patterns?

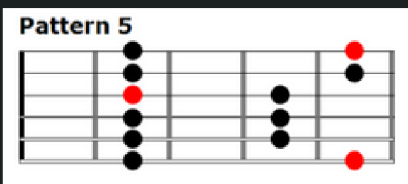
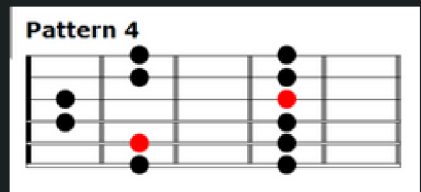
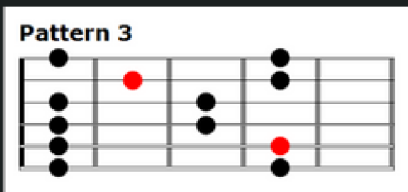
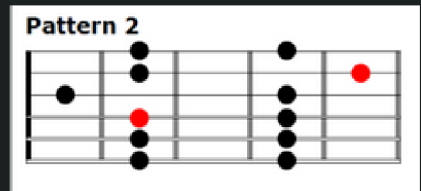
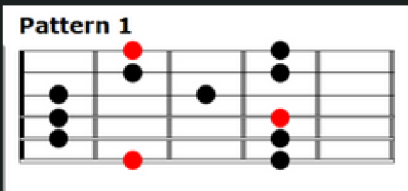
Here is how it works: Each dot represents a note of the scale. You should start with Keynote (red dot) going down and back up. The shapes are made so you have to play every dot on each string before moving to the next one. In order to play a specific scale just locate the keynote on the fretboard and start there.

Each pattern can be moved around to achieve a different tonality.

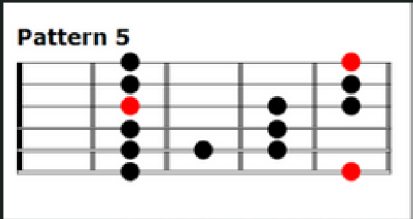
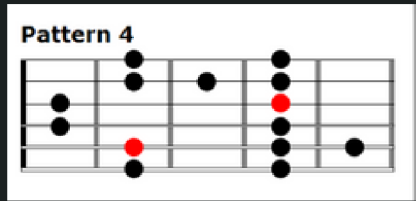
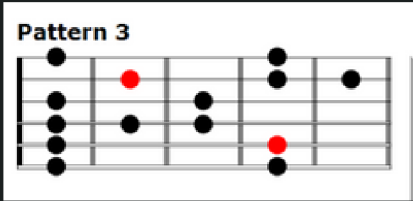
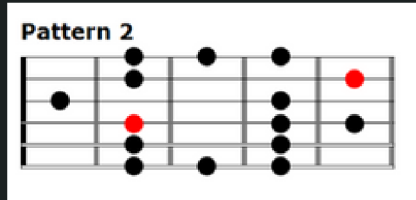
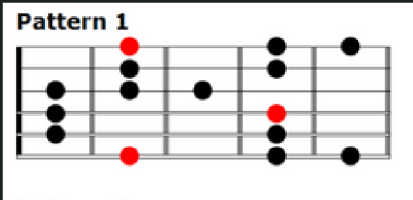
Major Scale:



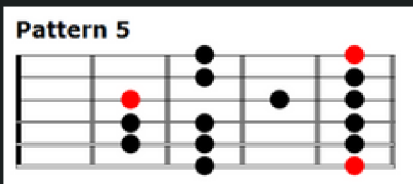
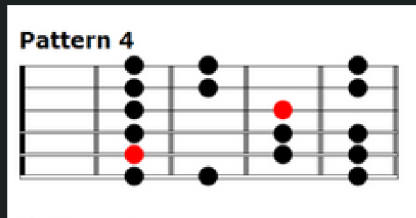
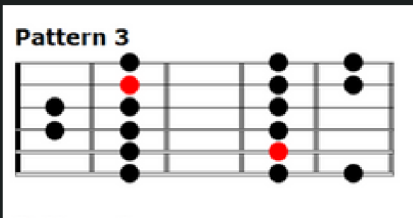
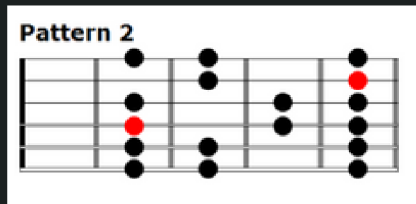
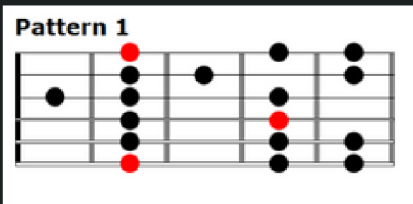
Major Pentatonic Scale:



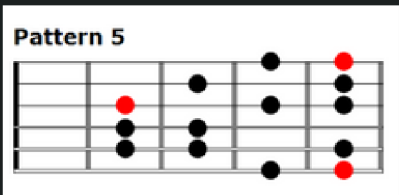
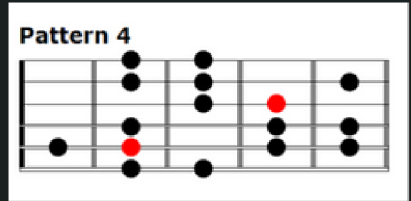
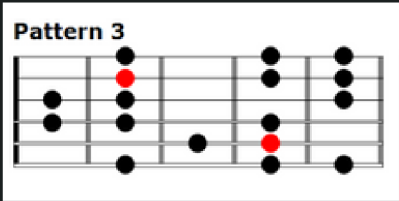
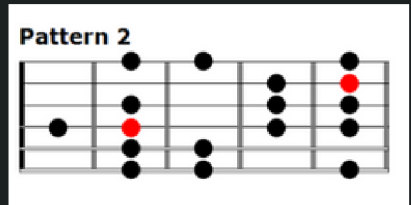
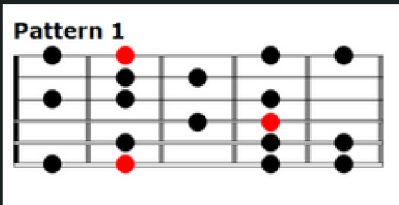
Major Blues Scale:



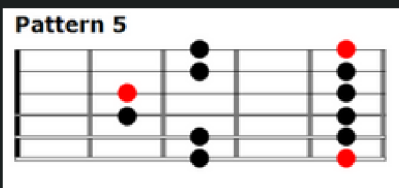
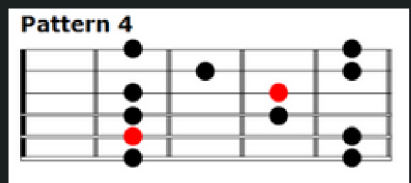
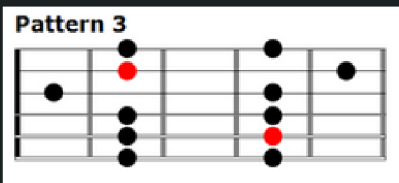
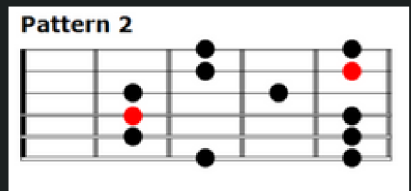
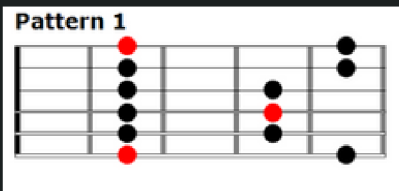
Minor (Melodic) Scale:



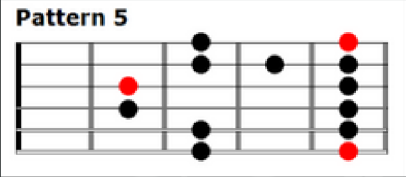
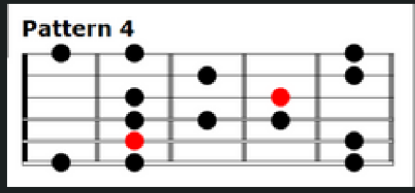
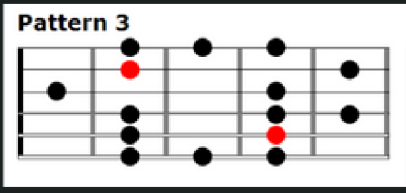
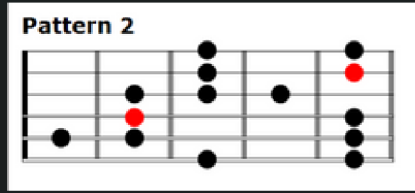
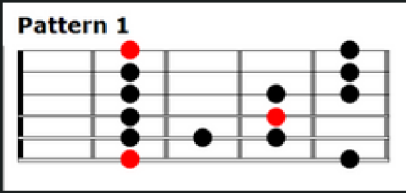
Minor (Harmonic) Scale:



Minor Pentatonic Scale:



Blues (Minor Blues) Scale:



digitMats