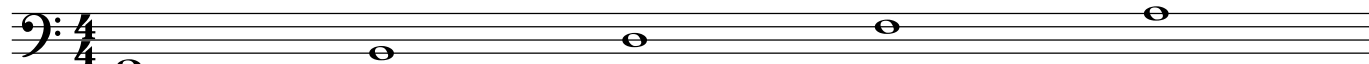


# Note Reading Worksheet

## Bass Clef Exercise #1

G B D F A

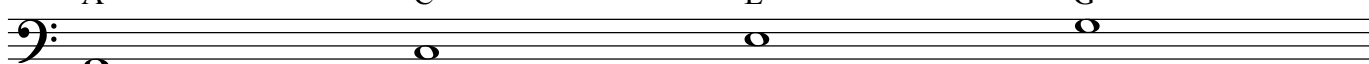


Good Boys Do Fly Airplanes

LINES: Write each note's name underneath

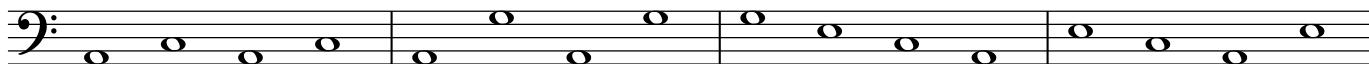


A C E G

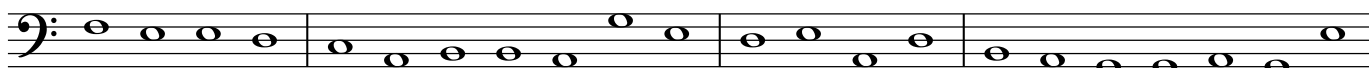
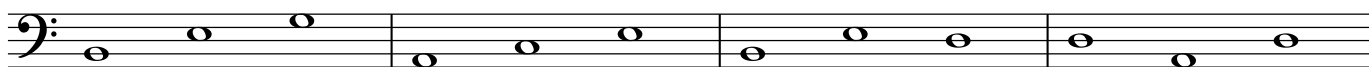
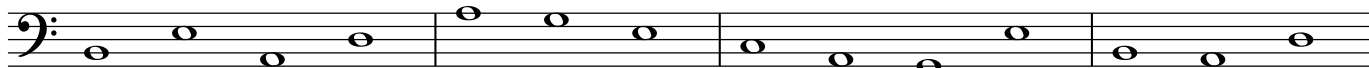


All Cows Eat Grass

SPACES: Write each note's name underneath



ALL NOTES: Write each note's name underneath. Each measure's notes spell a word.



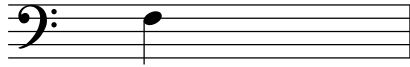
Name \_\_\_\_\_

Class \_\_\_\_\_

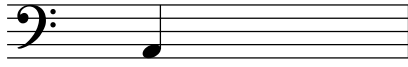
## Name Pitches II - Bass Staff

Name each pitch.

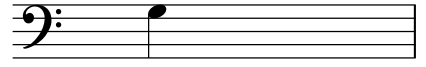
1



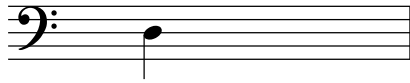
2



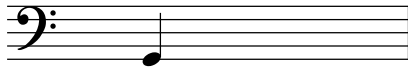
3



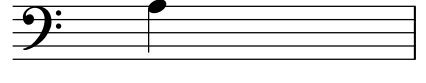
4



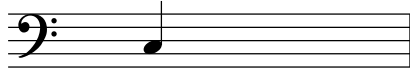
5



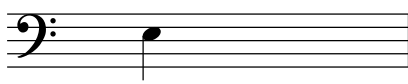
6



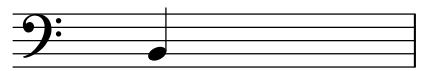
7



8



9

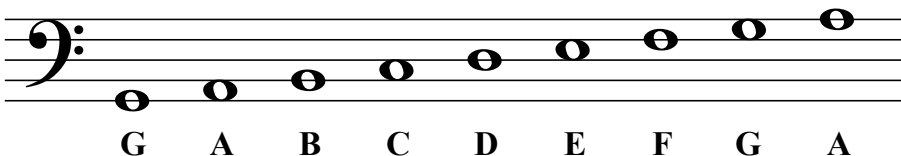


# The Staff - Bass Clef

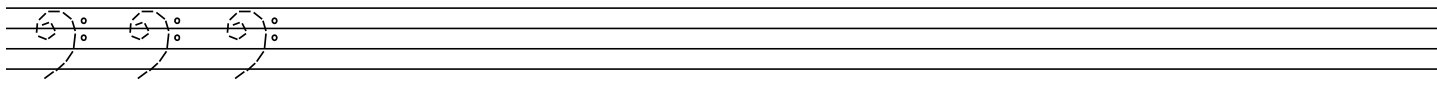
A **clef** appears at the beginning of each staff. The clef shown here is a **bass clef**.



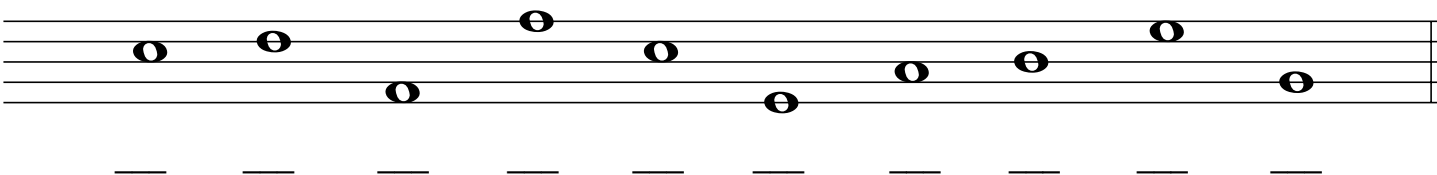
Each note on the bass clef staff has a letter name.



1. Practice drawing the bass clef sign by tracing over the guidelines. Draw five more in the remaining space.

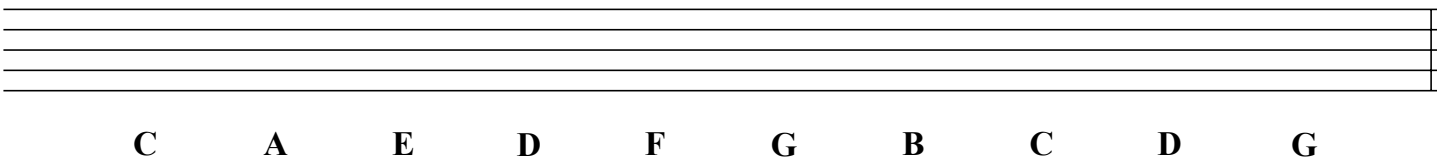


2. Draw a bass clef at the beginning of the staff and write the letter name of each note.



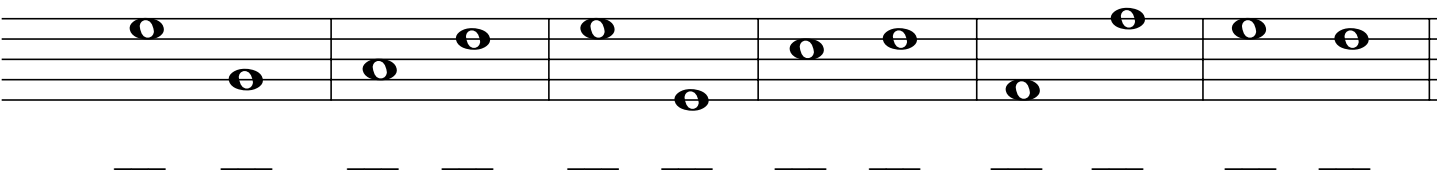
3. Draw the bass clef at the beginning of the staff and then draw the notes indicated.

If a note can be drawn in more than one place on the staff, choose which one you want to draw.



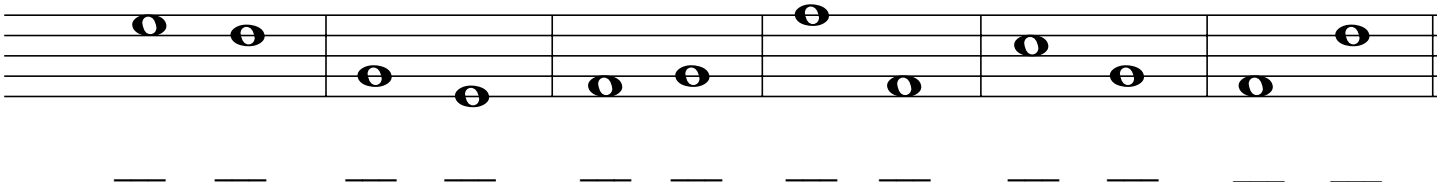
4. Draw the bass clef at the beginning of the staff.

Write the letter name for each note, then circle the higher note in each pair.



5. Draw the bass clef at the beginning of the staff.

Write the letter name for each note, then circle the lower note in each pair.



# Note Reading Worksheet

## Bass Clef Exercise #2

Good                  Boys                  Do                  Fly                  Airplanes

LINES: Write each note on the correct line using quarter notes. Notes below D should have a stem on the right side facing up. Notes on or above the D line should have the stems facing down from the left side.

G      D      G      D      G      D      B      F      B      F      D      G      F      D      B      A

A      G      B      G      G      B      D      B      A      B      G      F      A      F      D      B

All                  Cows                  Eat                  Grass

SPACES: Write each note in the space. Use quarter notes again. Make sure the stems are correct.

A      G      C      E      A      C      A      E      C      A      G      A      G      A      C      E

A      C      A      C      G      E      G      E      E      C      A      G      E      A      C      A

ALL NOTES: Write each note on the line or space. This time write half notes.

B      E      A      D      A      G      E      C      A      G      E      B      A      D

B      E      G      A      C      E      B      E      D      D      A      D

F      E      E      D      C      A      B      B      A      G      E      D      E      A      D      B      A      G      G      A      G      E

Name \_\_\_\_\_

Date \_\_\_\_\_

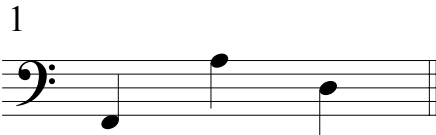
# Musical Words - Bass Clef I

Each group of notes spells a word.  
Write the word that each group spells.

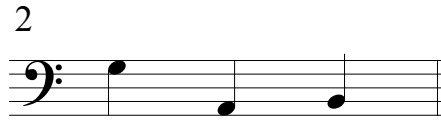
Example



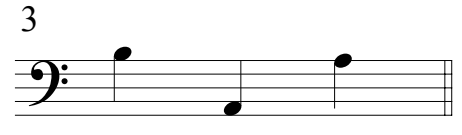
B E D



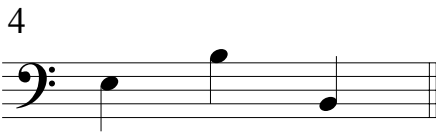
— — —



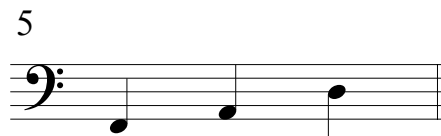
— — —



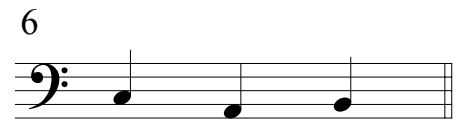
— — —



— — —



— — —



— — —



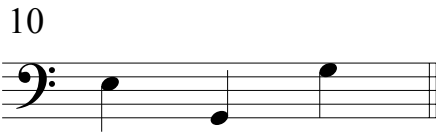
— — — —



— — — —



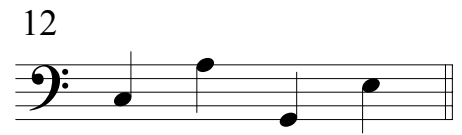
— — —



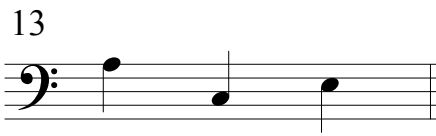
— — —



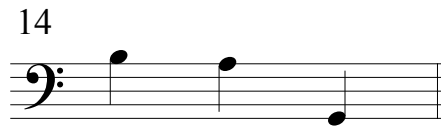
— — —



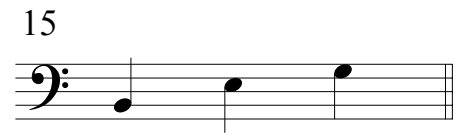
— — —



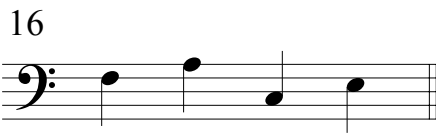
— — —



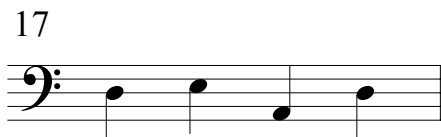
— — —



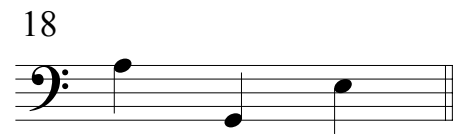
— — —



— — — —



— — — —



— — —

Name \_\_\_\_\_

Class \_\_\_\_\_

# Spell Words with Bass Pitches

Write the words that the pitches spell.

1



2



3



4



5



6



7



8



9



10



11



12



13



14



15



16



17



18



19



20



21



22



23



24



25



26



27

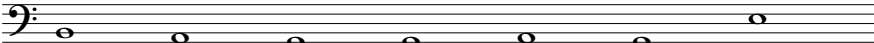


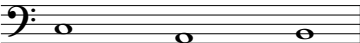
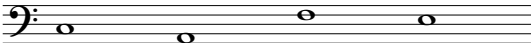
28

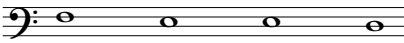
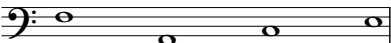
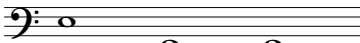


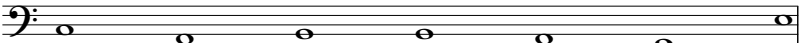
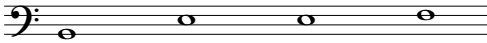
# A MUSICAL STORY


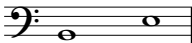
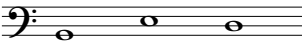
Complete the story by filling in the note names underneath each measure.


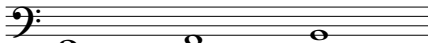
I went on a fun trip with my friend. We packed our 

and climbed into a  . Along the way we stopped at a 

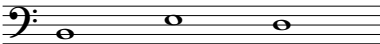
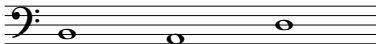
to  our  . We had an 

,  and 

sandwich. Ugh! The food was really  . We felt like we should  in 

so I  my friend to cut the 

and return home. I feared that i would  and felt like an animal in a 

. Suddenly I awoke and found myself at home in  . It had only been a 

dream.

Name \_\_\_\_\_

Date \_\_\_\_\_

# Bass Clef - Ledger Lines

**Ledger lines** can be used to extend the upper and lower ranges of a staff.

This example includes notes which can be written above and below the bass clef using **ledger lines**.

C D E F B C D E

1. Draw a bass clef at the beginning of the staff and write the letter name of each note.

— — — — — — — —

2. Draw a bass clef at the beginning of the staff and write the letter name of each note.

— — — — — — — —

3. Draw the indicated notes. Use ledger lines to draw the specified number of pitches without duplication.

*Example*

3 Cs

3 Ds

2 As

2 Bs

2 Fs

2 Bs


2 Gs

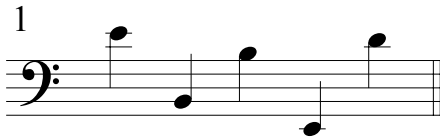
3 Cs



# Musical Words - Bass Clef II

Each group of notes spells a word.  
Write the word that each group spells.

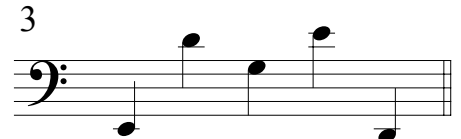
Example   
D E E D

1 

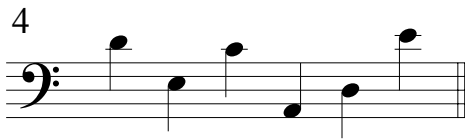
-----

2 

-----

3 

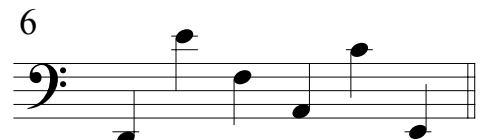
-----

4 

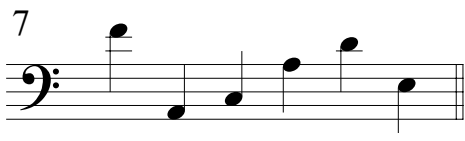
-----

5 

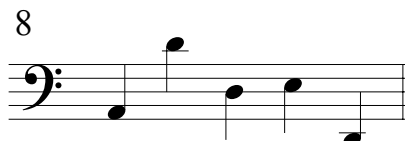
-----

6 

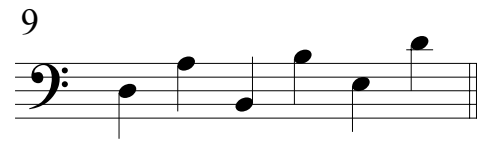
-----

7 

-----

8 

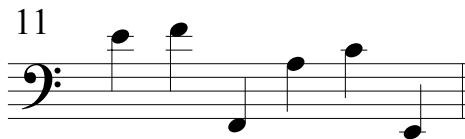
-----

9 

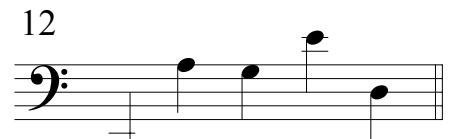
-----

10 

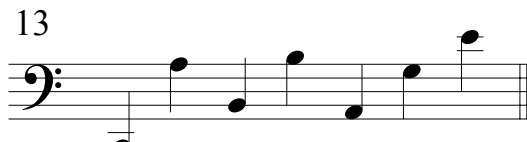
-----

11 

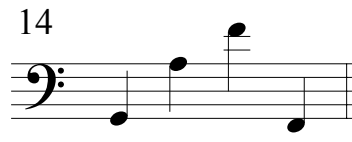
-----

12 

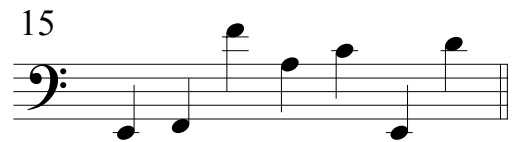
-----

13 

-----

14 

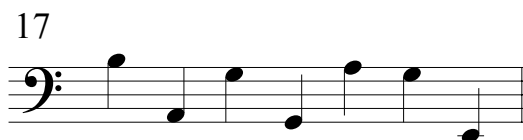
-----

15 

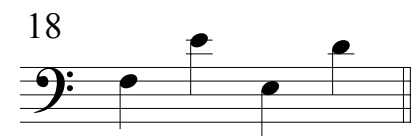
-----

16 

-----

17 

-----

18 

-----